

Product information Control Configurator MS

- Easy to use software tool for quick setup of typical alarm message systems
- Based on the small PLC FP0 and GSM wireless module Wavecom or Siemens TC35(i)
- Send SMS (Short Messages) via GSM mobile phone nets to up to 4 mobile phones
- No programming skills necessary!



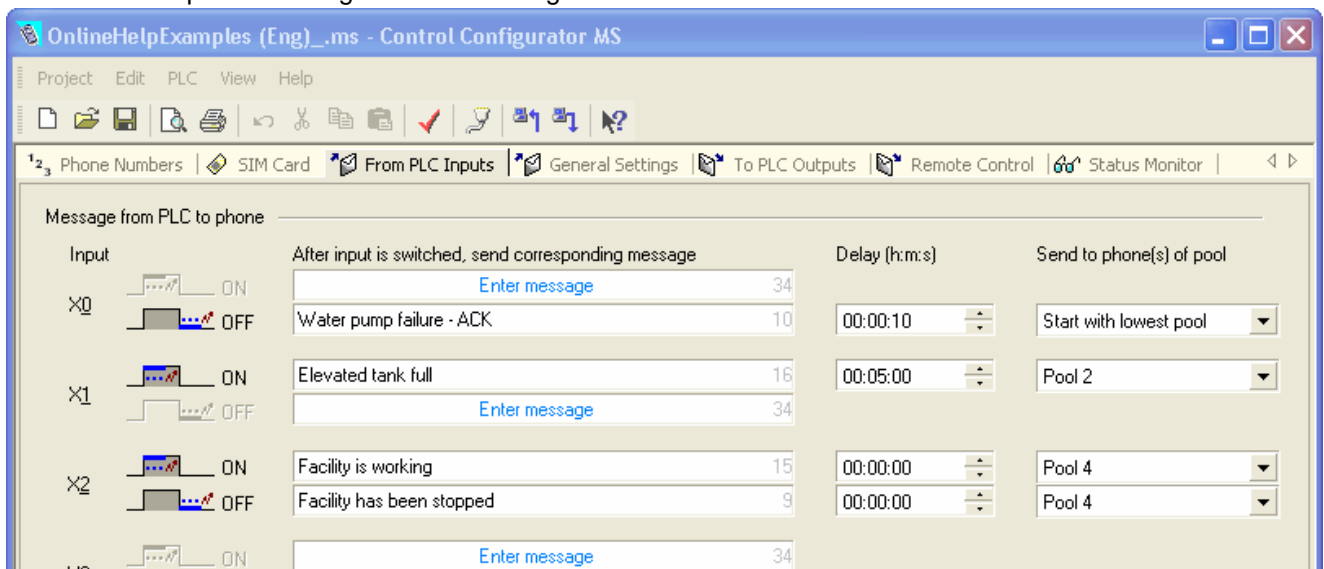
Control Configurator MS provides a complete, ready to use PLC program, which can easily be configured and downloaded to the FP0 PLC.

For the configuration phone numbers, texts for outgoing alarm messages and some delay times have to be entered. When also remote access via mobile phone, e.g. for switching outputs of the PLC is desired, texts for commands have to be entered.

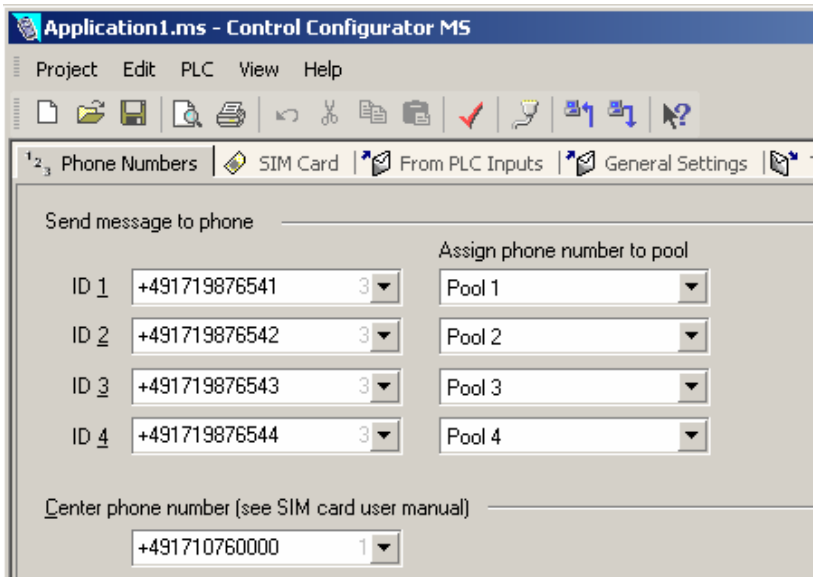
Within a few minutes your intelligent alarm message controller is ready for use. Also an intelligent phone number handling is included.

FP0C10CRS and Wavecom GSM Module

Window for input of message texts and configuration of behavior

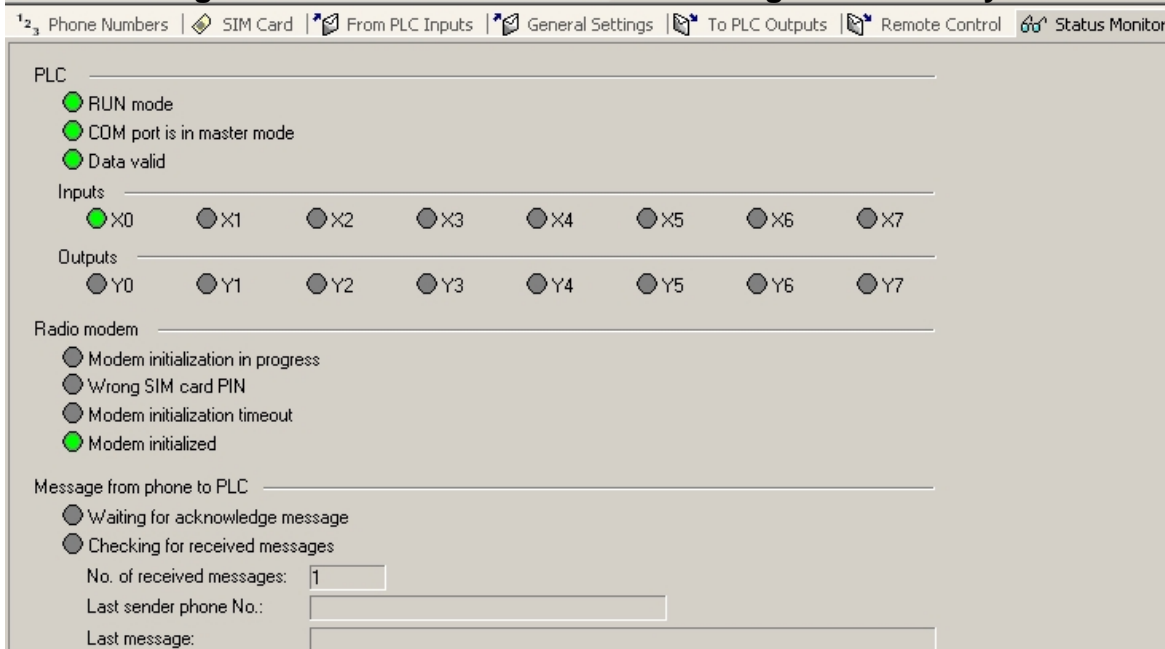


**Control Configurator MS allows you to easily enter all parameters in a clear and convenient way.
All data can be saved in a file on the hard disk, which is very useful if more than one system with similar parameters have to be installed.**



Window for input of phone numbers and management of priorities

Online dialogue with the PLC for status monitoring and test of system



Send Messages

- SMS are sent, when a PLC input changes to ON or to OFF state
- Up to 8 inputs can be configured and thus up to 16 text messages can be configured. The SMS can consist of up to 34 characters.
- Time delays can be configured for inputs
- Inputs can be filtered by entering a time value, how long an input has to keep until sending a SMS
- Messages can be sent to up to 4 phone numbers
- Depending on the provider messages can also be forwarded to a Facsimile machine or to an Email address
- Multiple sending is possible: messages can be sent to one or in parallel to several phone numbers
- Acknowledge function for SMS can be selected
- If a message is not acknowledged within a preset time by sending back another SMS with a certain password, the system repeats to send it to other phone numbers
- An individual substation name is part of the SMS for easy identification of the originating station
- credit surveillance system for Prepaid-SIM cards

Remote Control

- Switch up to 8 outputs ON or OFF by sending one message
- When an output has been switched, it can be switched back with a time delay.
- initial state of the outputs can be defined. PLC remembers the state of outputs if a power failure occurs.
- confirmation messages can be sent as a reply with the current output status.
- current status of the system can be checked by sending a message: the reply contains the current status of the inputs and outputs and any currently active alarm messages to the phone which has sent the status request.

Remote maintenance

- phone numbers can be exchanged via SMS
- different pools can be assigned to a phone number via SMS
- confirmation messages can be redefined via SMS
- a state that allows remote configuration can be switched by a control SMS

Other functions

- Data input is checked for validity
- Diagnostic functions inform about the state of the system
- all settings can be loaded and saved from / into a file
- Upload/Download a project from/to the programmable logic controller (PLC)
- Print and preview a project

necessary hardware	Part No.	comment
Programmable Controller 2,7 K programming memory, 1 programming port (RS232C), 1 communication port (RS232C)	FP0-C10CRS	6 digital inputs, 4 digital relay outputs
	FP0-C14CRS	8 inputs, 6 digital relay outputs
	FP0-C16CP	8 inputs, 8 pnp transistor outputs
Power cable for PLC	AFP0581J	packed with the FP0
Power supply	FP0-PSA2	24V DC, 0.7A
PLC programming cable	AFC8513D	
Cable between FP0 COM-Port and GSM Module	CABMODPLC111D	
Hardware not provided by Panasonic Electric Works		
GSM Module	Wavecom WMOD2, Fasttrack M1206, Siemens TC35(i), MC35(i)	GMS wireless modules have similar AT command set following ETSI standard. Small differences make it necessary to test each new version, even for similar types. Please ask Matsushita!
Power supply cable for GSM Module		
Antenna	e.g. GSM Magnetic Antenna with FME female	
SIM-card	any GSM 900/1800 provider worldwide	Also prepaid cards are supported with a credit surveillance system

System requirements

Personal Computer with Operating system Win 95, 98, ME, NT 4.0, 2000, XP and one RS232 Interface or USB port and USB/converter cable.

Order Information:

Product name: Control Configurator MS
Part No.: AFPS34510-D

Contents: CD with setup and licence number, also containing an pdf-manual

Free Demo version available (limitation on 2 inputs and 2 outputs):
www.panasonic-electric-works.com under Products / PLC / Demo Software