



**FEATURES**

- DIN rail mount
- DIN module size
- 1 minute interval setting
- Fully electric quartz clock
- 3 state terminal (COM-NO-NC)
- Easy programming
- 10 years power failure backup battery
- EN50178, DIN57633 conformed

**APPLICATIONS**

- Lighting Fixture
- Sign Board
- Factory facility
- Vending machines

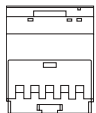
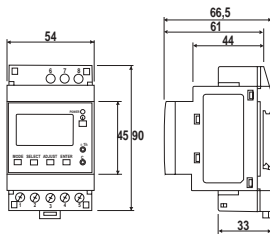


**PRODUCT TYPES**

Model No.	Product name	Rated voltage	No. of circuit
TB6110187	Digital type weekly TIME SWITCH (with power failure backup)	220-240VAC	1 circuit
TB6120187	Digital type weekly TIME SWITCH (with power failure backup)	220-240VAC	2 circuits

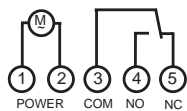
**DIMENSIONS**

- TB6110187 <1 Circuit type>

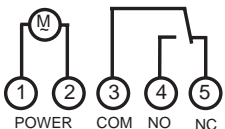
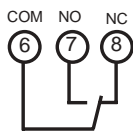


**CIRCUIT DIAGRAM**

- TB6110187 <1 Circuit type>



- TB6110187 <2 Circuits type>



**SPECIFICATIONS**

Model No.	TB6110187	TB6120187
Program Cycle	Weekly Type	
Driving Method	Full Electronic (Quartz Oscillation)	
Rated Voltage	220-240 V AC	
Allowable Operating Voltage	-15% to + 10% of rated voltage	
Rated Frequency	50-60Hz	
Power Consumption	2W	
Time Indication (liquid crystal)	day/hour/minute	
Power Supply & Output Indicator	Power Supply...Green LED, Output...I/O by LCD	
Number of Circuit	1-circuit	2 circuits
Circuit Configuration	Separated Circuit (NO Voltage-applied contact output)	
Contact Configuration	Single Pole, Double-through ( — ); $\mu$ -gap	
Manual ON/OFF	with Manual Button (permanent ON/OFF available)	
Switching Capacity		
Resistive Load (cos $\phi$ =1)	250V AC 16A	
Inductive Load (cos $\phi$ =1)	250V AC 8A	
Minimum Setting Unit	1minute	
Minimum Setting Interval	1minute	
Number of Operation	30programs total (Max. ON/OFF per day: 15sets available)	
Additional Function		
Non-Energized Setting	Available (Program can be set before installation even in power failure)	
Holiday Setting	Available (for 1~99 days from next day)	
Summer-time	Available (the current time can be shifted by one hour setting to the summer time by one-touch operation)	
Running Reserve	10 years at 20°C (lithium battery built-in) The memory of a clock and the program can be assured)	
Time Accuracy	$\pm$ 15 sec/month(at 25°C)	
Working Ambient Temperature	-20°C~+55°C	
Working Ambient Humidity	85%RH or less	
Degree of Protection	IP 20 as per EN60529	
Protection Class	Class II as per EN60335-1 if installed as directed	
Pollution Degree	2	
Over Voltage Category	III	
Wiring Terminal Capacity	1~2.5mm <sup>2</sup>	
Weight	140g	150g
Option Parts	TB55603777/Terminal Cover	TB61203777 Terminal Cover

**SAFETY INSTRUCTIONS**

1. All operations serving transport, installation, commissioning, troubleshooting and maintenance are to be carried out by skilled technical personnel in accordance with the relevant safety regulations and standards.
2. Avoid using the time switch except for the environment condition shown in specifications. Indoor use only.
3. Load capacity differs, depending on the type of load. (See specifications).
4. Protect the circuit with a fuse or breaker at the power supply, in accordance with the relevant regulations.
5. This Time Switch contains Lithium battery. Do not under any circumstance throw the battery into fire or flame.
6. Make wiring connections, using insulated wire (1,0 to 2,5 mm<sup>2</sup>). Flexible codes conductors 1,0 to 2,5mm<sup>2</sup>. Fixed wiring conductors 1,5 to 2,5mm<sup>2</sup>.
7. After wiring, check that wiring connections are all correct.